

A photograph of a vast field of sugarcane plants. The plants are tall, green, and have long, narrow leaves. They are arranged in neat rows, stretching far into the distance. The lighting is bright, suggesting a sunny day. The overall scene is a healthy and productive sugarcane plantation.

# Sugarcane in Louisiana

The American Sugar Cane  
League Jim Simon





# Industry overview



Tenant Farmers  
75% of land is rented

Tenant Farmers  
75% of land is rented

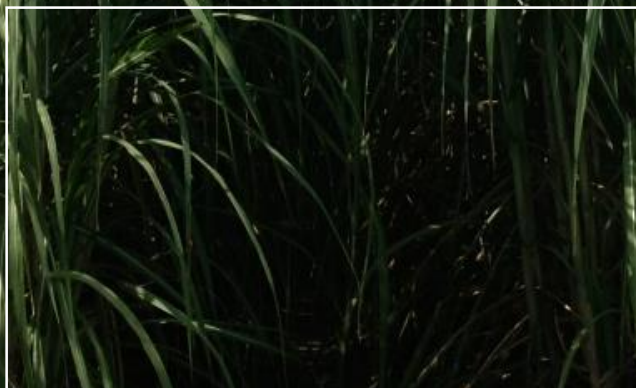
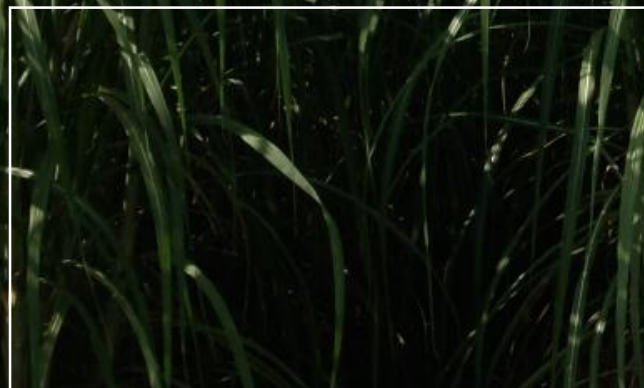
We farm at the  
pleasure of the  
landowner



Tenant Farmers  
75% of land is rented

We farm at the  
pleasure of the  
landowner

Let's be Clear  
We support  
landowner rights



Tenant Farmers  
75% of land is rented

We farm at the  
pleasure of the  
landowner

Let's be Clear  
We support  
landowner rights

We are not  
opposed to  
solar





Tenant Farmers  
75% of land is rented

We farm at the  
pleasure of the  
landowner

Let's be Clear  
We support  
landowner rights

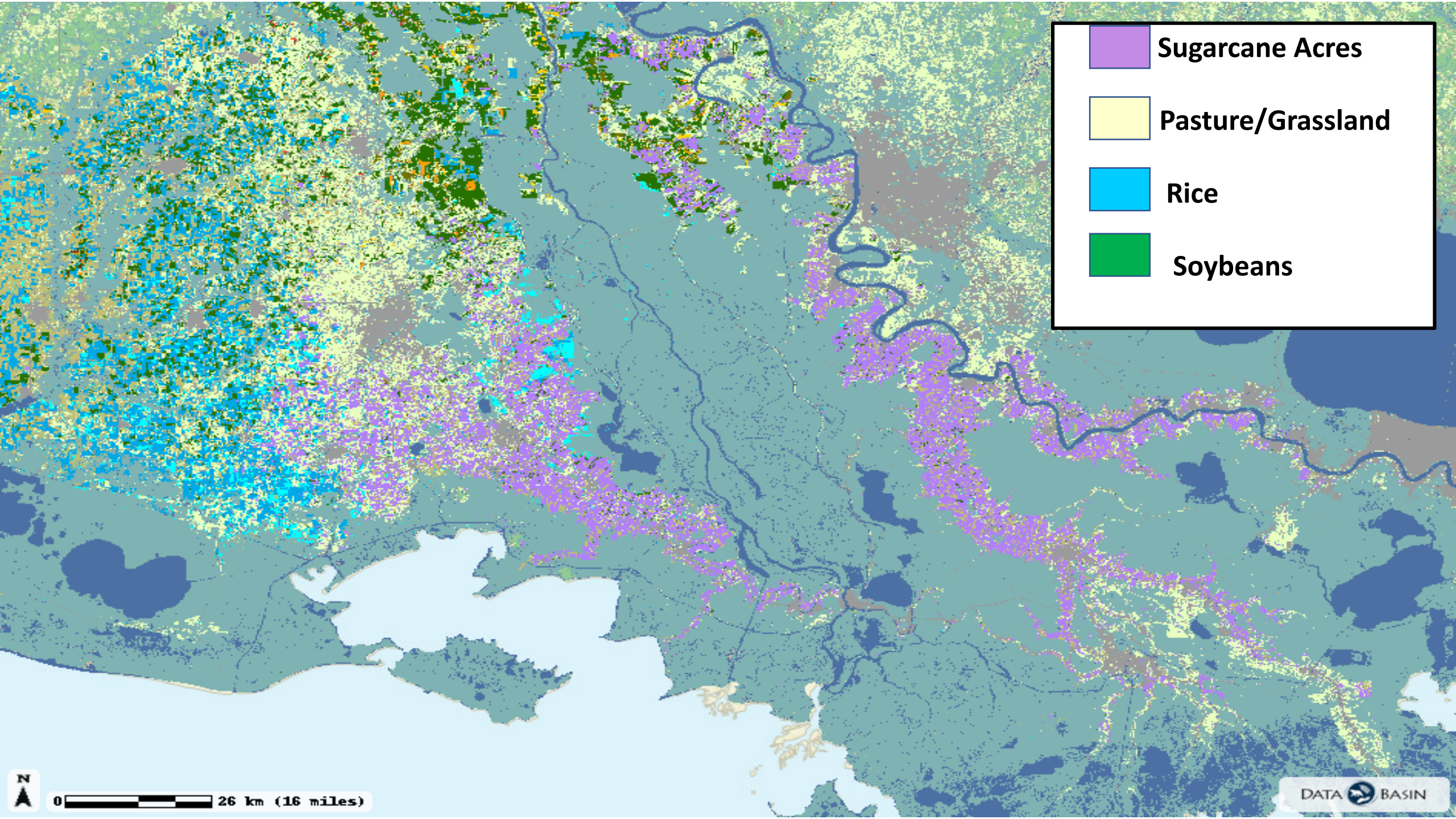
We are not  
opposed to solar

We want our state  
and local elected  
officials to be  
educated

# Tax incentives to Create Jobs?

What puzzles us is why would our state and Local governments use tax incentives to eliminate jobs?

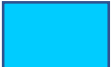
Solar has the real potential to eliminate sugar Industry Jobs.



Sugarcane Acres



Pasture/Grassland



Rice



Soybeans



0 26 km (16 miles)

So What is our  
concern?

